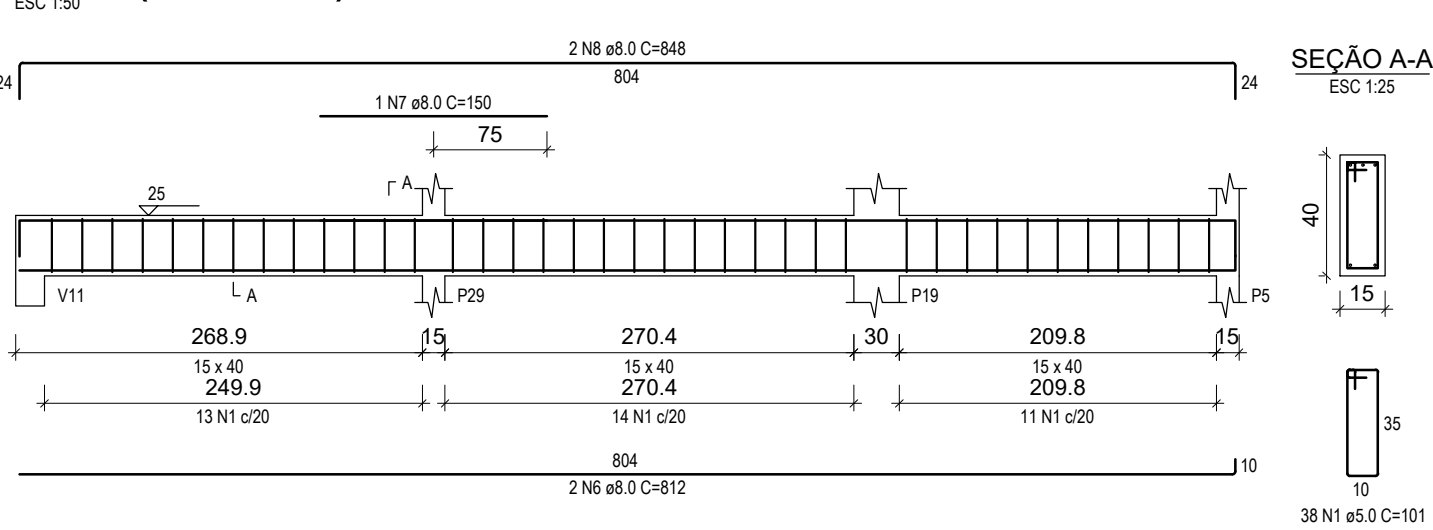
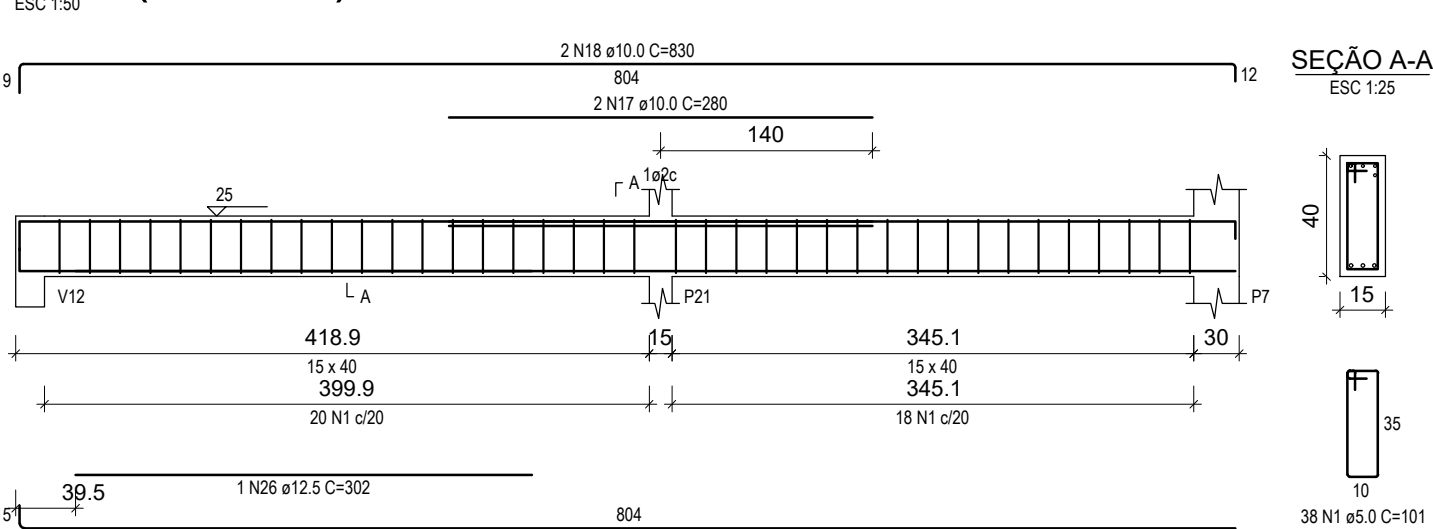


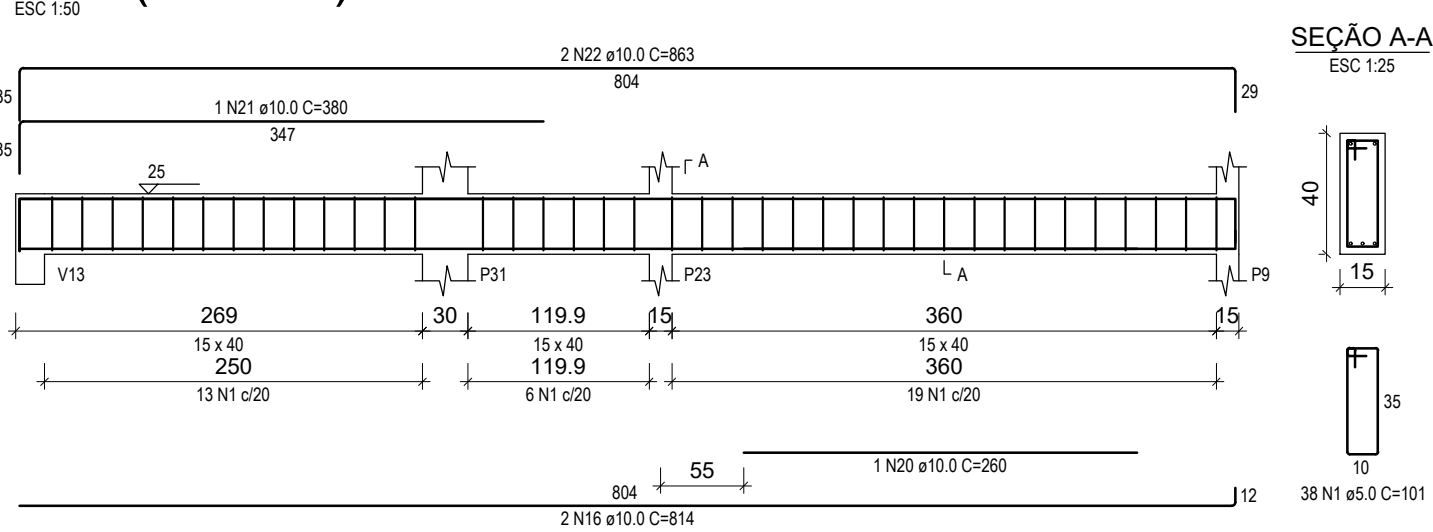
V33 (15 x 40)



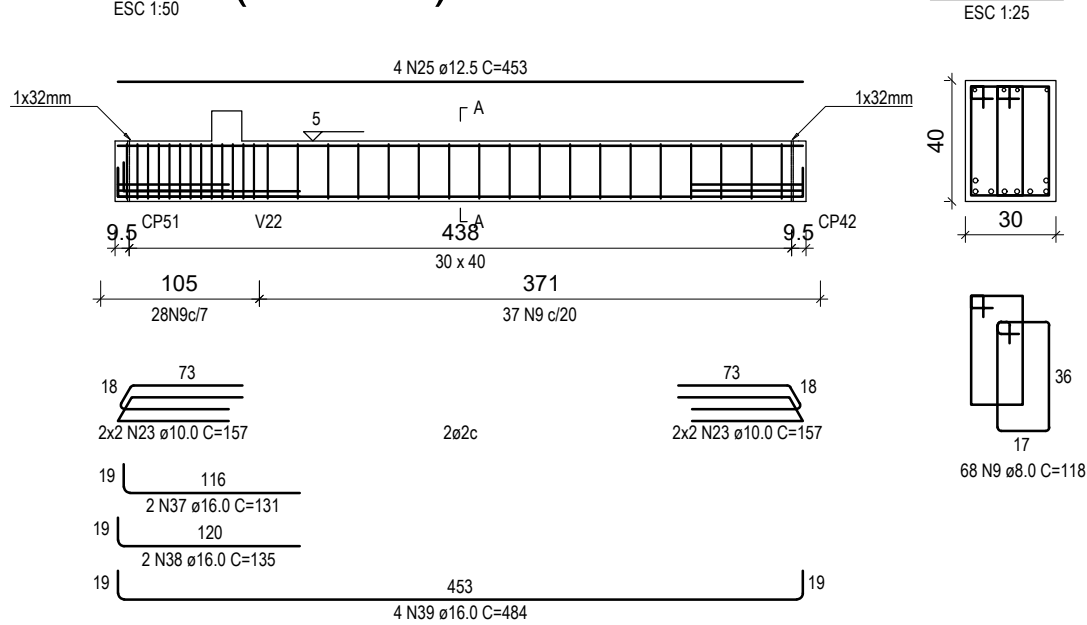
V36 (15 x 40)



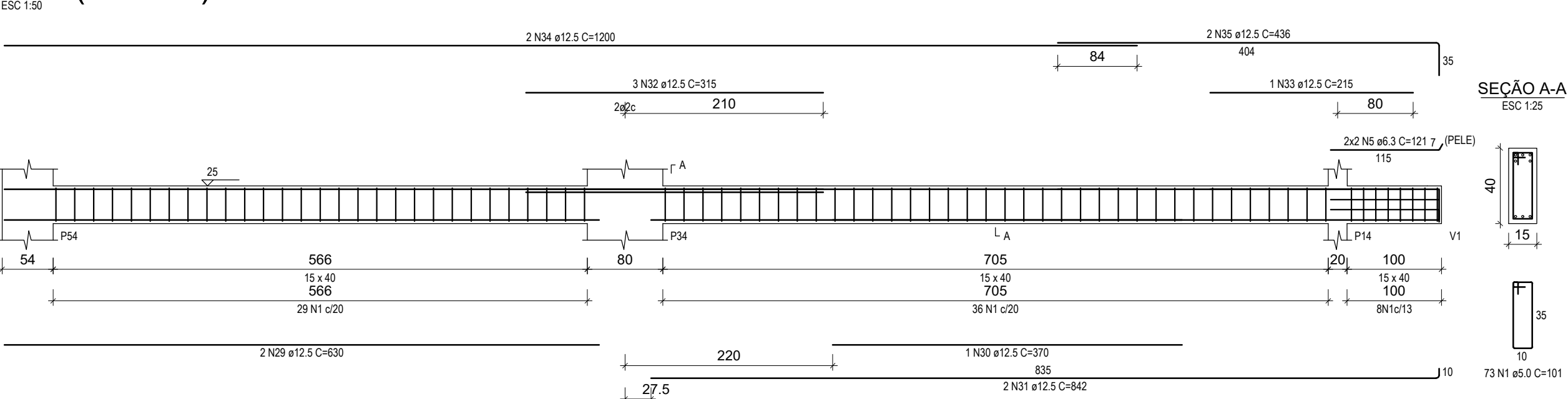
V39 (15 x 40)



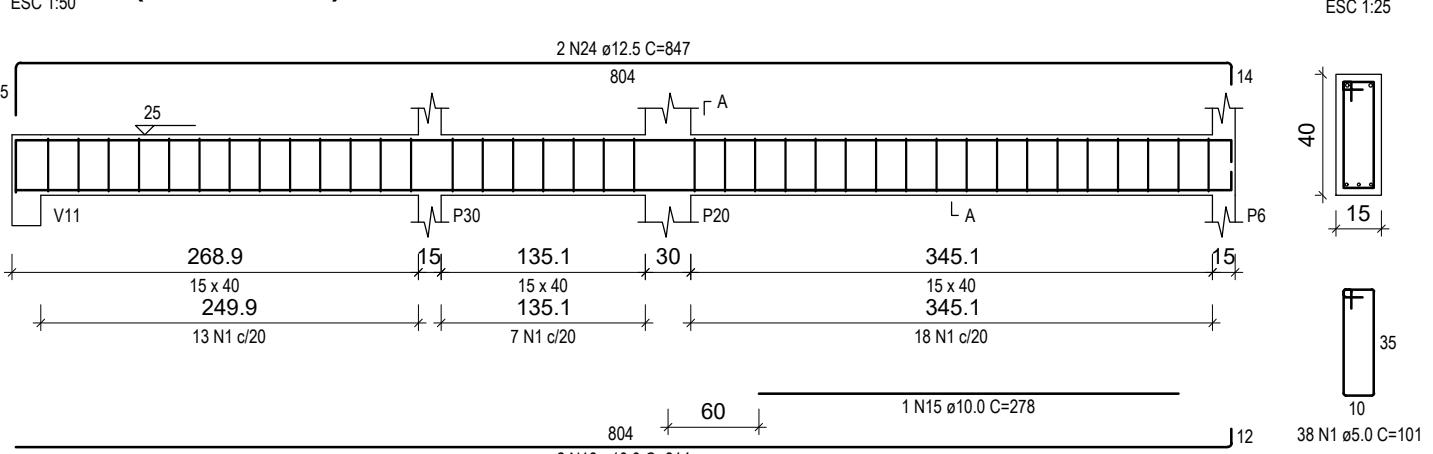
V43 (30 x 40)



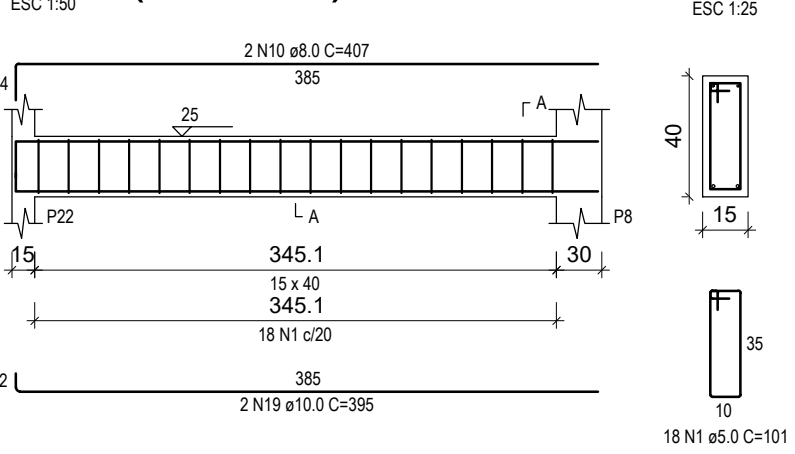
V46 (15 x 40)



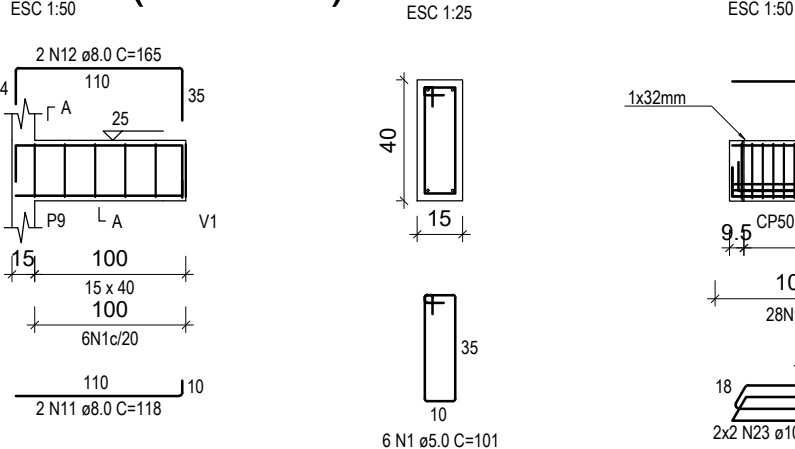
V34 (15 x 40)



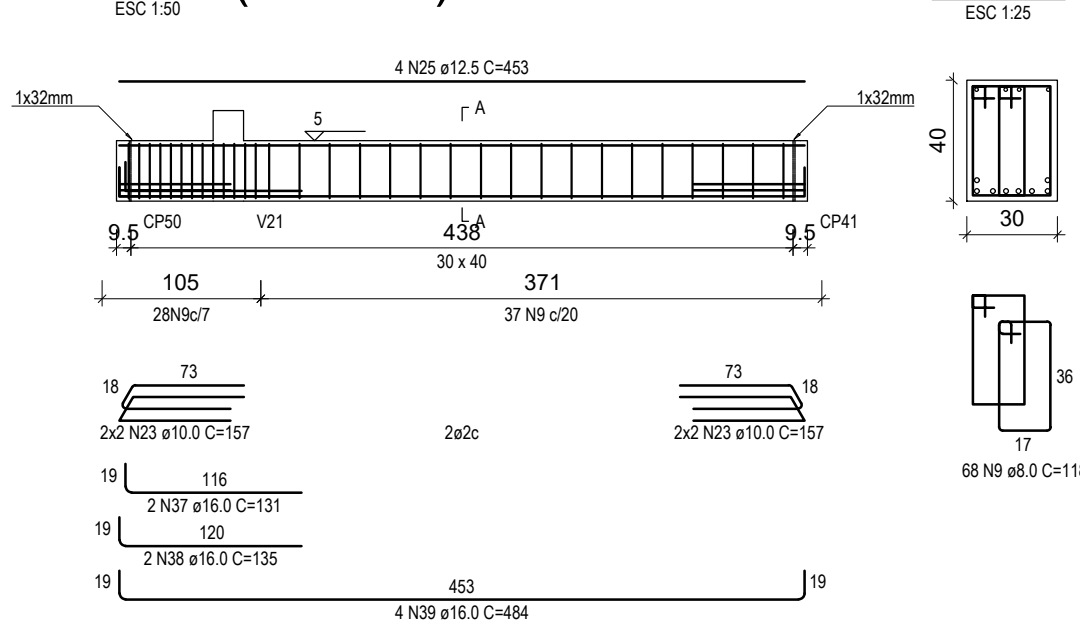
V37 (15 x 40)



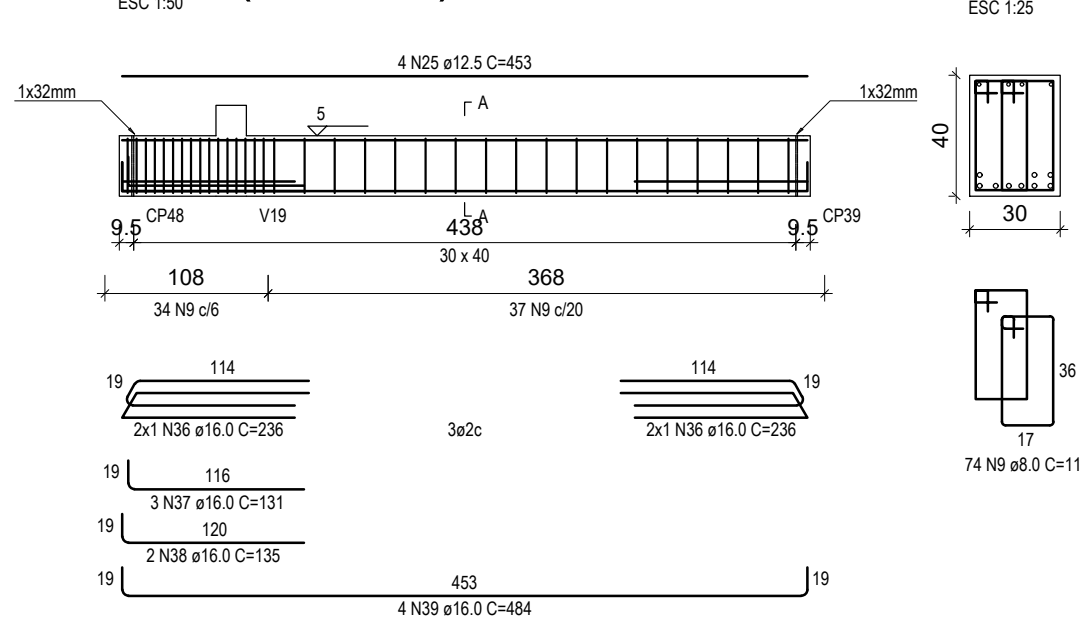
V40 (15 x 40)



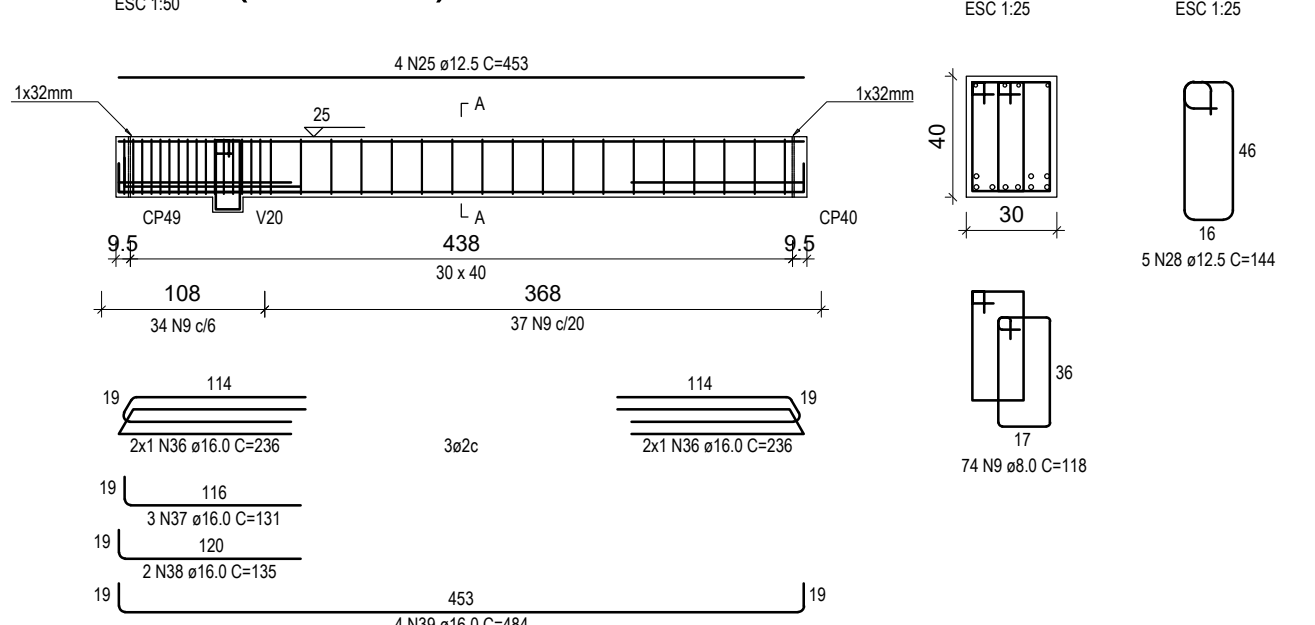
V41 (30 x 40)



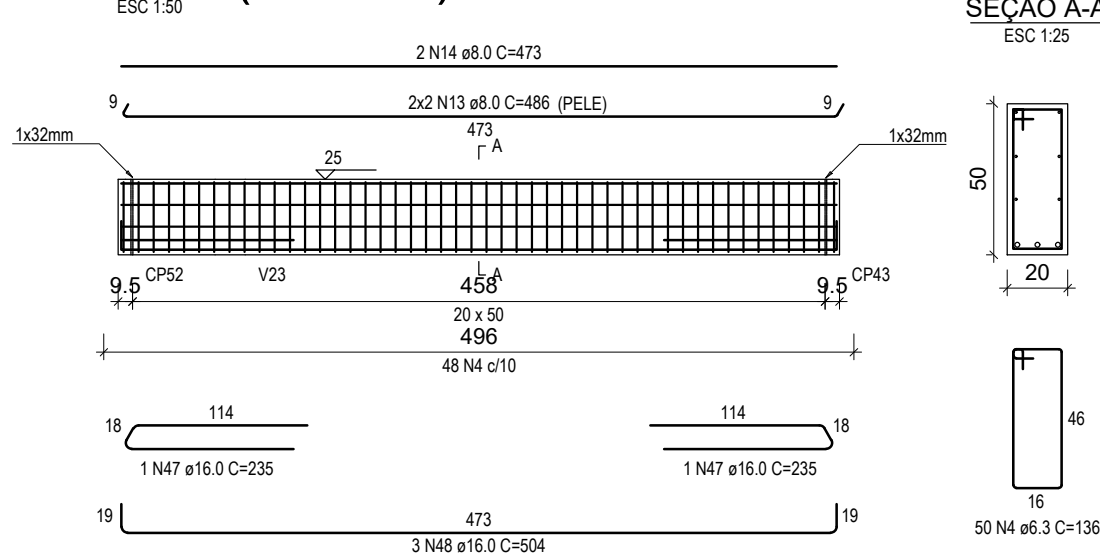
V35 (30 x 40)



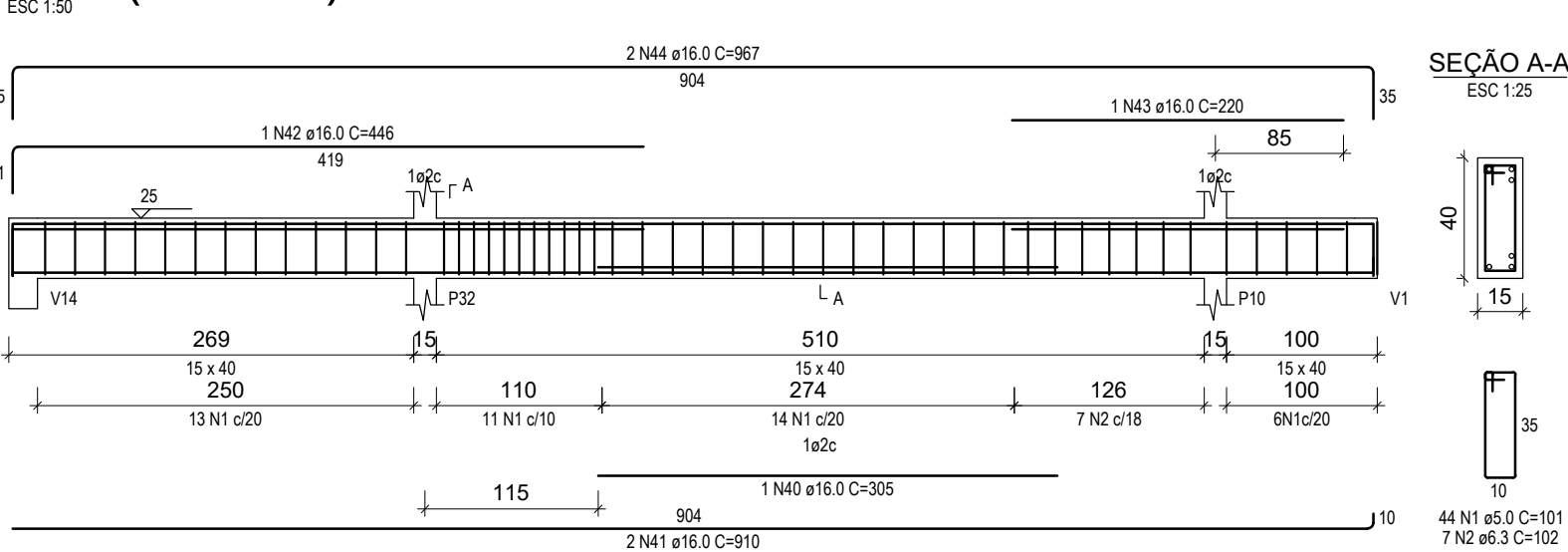
V38 (30 x 40)



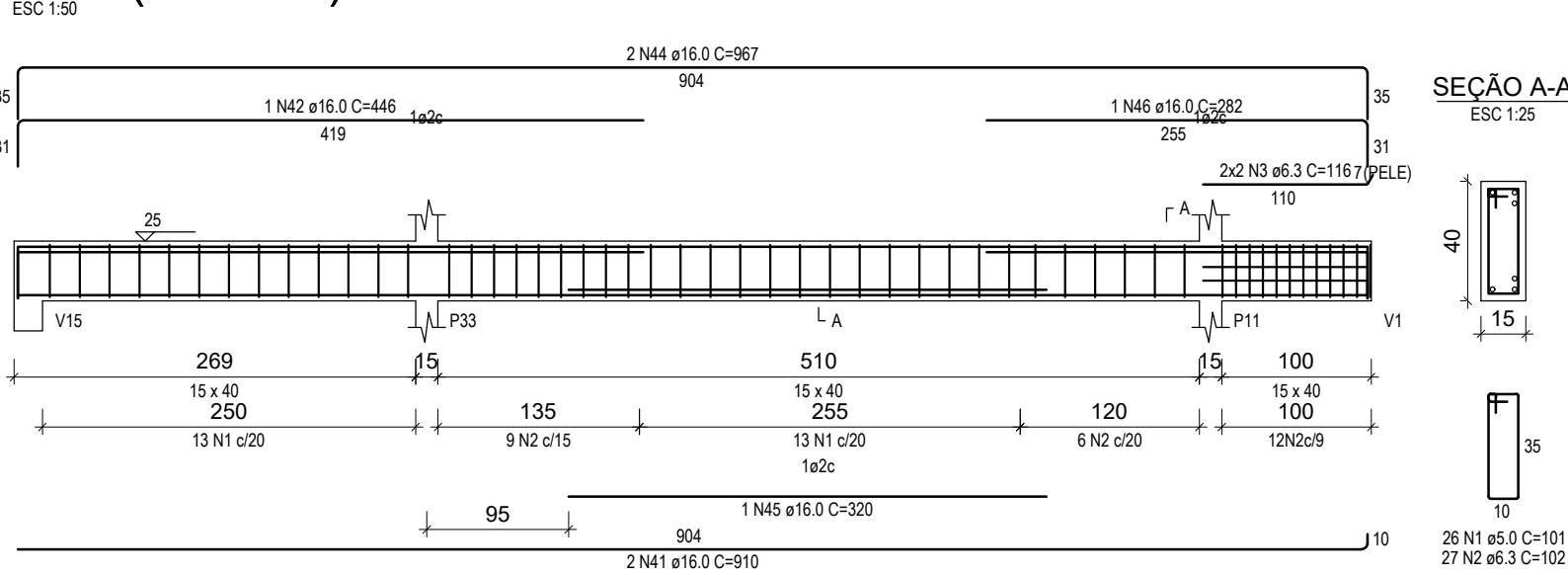
V45 (20 x 50)



V42 (15 x 40)



V44 (15 x 40)



RELAÇÃO DO AÇO

AÇO	N	DIAM (mm)	QUANT	C.UNIT (cm)	C.TOTAL (cm)
V33	1	5.0	319	101	32219
V36	2	6.3	34	102	3468
V39	3	6.3	4	116	464
V42	4	6.3	50	136	6800
V45	5	6.3	4	121	484
	6	8.0	2	812	1624
	7	8.0	1	150	150
	8	8.0	2	848	1696
	9	8.0	284	118	33512
	10	8.0	2	407	814
	11	8.0	2	118	236
	12	8.0	2	165	330
	13	8.0	4	486	1944
	14	8.0	2	473	946
	15	10.0	1	278	278
	16	10.0	4	814	3256
	17	10.0	2	280	560
	18	10.0	2	830	1660
	19	10.0	2	395	790
	20	10.0	1	260	260
	21	10.0	1	380	380
	22	10.0	2	863	1726
	23	10.0	16	157	2512
	24	12.5	2	847	1694
	25	12.5	16	453	7248
	26	12.5	1	302	302
	27	12.5	2	816	1632
	28	12.5	5	144	720
	29	12.5	2	630	1260
	30	12.5	1	370	370
	31	12.5	2	842	1684
	32	12.5	3	315	945
	33	12.5	1	215	215
	34	12.5	2	1200	2400
	35	12.5	2	436	872
	36	16.0	8	236	1888
	37	16.0	10	131	1310
	38	16.0	8	135	1080
	39	16.0	16	484	7744
	40	16.0	1	305	305
	41	16.0	4	910	3640
	42	16.0	2	446	892
	43	16.0	1	220	220
	44	16.0	4	967	3868
	45	16.0	1	320	320
	46	16.0	1	282	282
	47	16.0	2	235	470
	48	16.0	3	504	1512

RESUMO DO AÇO

AÇO	DIAM (mm)	C.TOTAL (m)	PESO + 10% (kg)
CA50	6.3	112.2	30.2
	8.0	412.5	179.1
	10.0	114.2	77.5
	12.5	193.4	205
	16.0	235.3	408.5
CA60	5.0	322.2	54.6
PESO TOTAL (kg)			
CA50		900.2	
CA60		54.6	

Volume de concreto (C-30) = 6.92 m³

Área de forma = 93.13 m²

PROJETO ESTRUTURAL

Halla | arquitetura

Avenida Sete de Setembro, 50, Comercial C. Berri
Sala 09 | Centro | Timbó | Santa Catarina

+55 3333 1815 - +55 99214 4008
studiohalla3d@gmail.com
www.hallarq.com

CONSTRUÇÃO INSTITUCIONAL EM ALVENARIA - GINÁSIO ESCOLAR
Rodovia Estadual - SC, 416 - São Roque
Timbó - SC

Autor do Projeto: Anderson Halla
Arquiteto e Urbanista - CAU nº 176063-7

Assinatura:

Proprietário: Fundo Municipal de Educação - FMDE de Timbó
CNPJ: 32.257.384/0001-19

Assinatura:

Escala: Indicada
Revisão: 00
Data: Maio 2020

Especificação: Prancha:

VIGAS IN LOCO FUNDAÇÃO V33-V46